



## SA003-FLAT DRIPPER INSPECTION SYSTEM

Solution and trial report for a standard Flat dripper





### About:

The SA003- FLAT DRIPPER INSPECTION SYSTEM is a standard inspection machine for inspection of flat drippers available in the market. The machine consists of a Bowl feeder, Inspection system and an electric panel. The flat drippers are fed into the hopper in a batch quantity which will in turn be sent to the inspection system via the rotary bowl feeder. The flat drippers are on a linear belt conveyor where all the samples are checked by the camera system. The camera system consists of a high speed camera and lighting system which captures each and every image and checks the given parameters. All the rejected samples are rejected by a pneumatic air nozzle and it goes in the rejection bin via the rejection chute. All the good samples go to the collection bin via the diverter assembly which separates the products according to the batch size specified by the consumer.

### Salient Features:

- Works in industrial environment
- Inspection speed up to 600 Drippers per minute
- Fully Automatic
- Diverter Assembly
- Optional Data logging system which gives the users statistics on the number of products inspected and rejected, and tabulates the data according to different faults so that the consumer can identify the main cause of rejection.
- Easy to operate and navigate the system

### The system consists of the following stations:

- A rotary Bowl feeder with a hopper
- A single high resolution camera inspection system
- Image processing system
- High speed pneumatic rejection system
- PLC based control system with a HMI
- LCD screen to show captured images

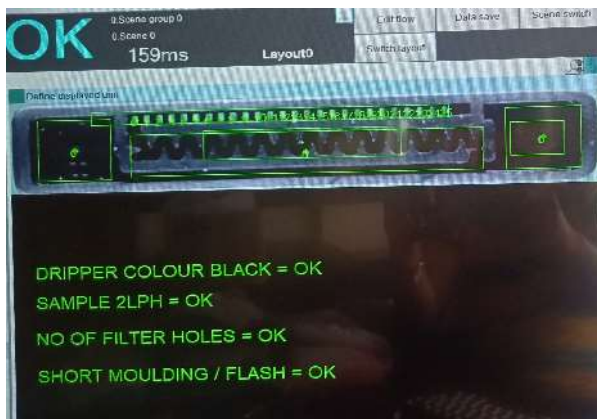
**Optional Data logging system:** The data logging package allows the users to tabulate all the data in a tabulated form and creates graphs and charts based on the following data:

- Total Number of samples inspected
- Total number of accepted samples
- Total number of Rejected Samples
- Rejected samples tabulated fault wise

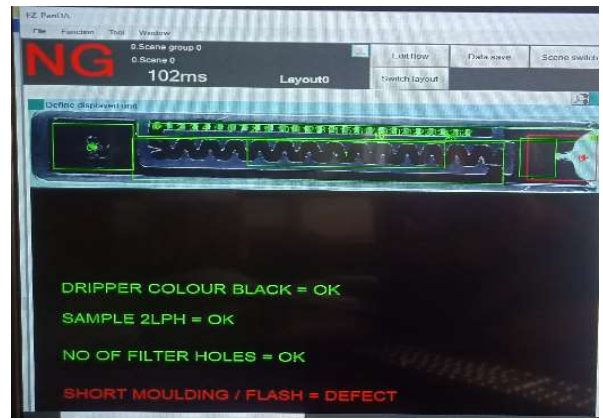
**Camera Inspection Solution:** Usage of a single high speed camera inspection system along with its necessary lighting and other accessories enables to check the following parameters:

- Number of filter holes
- Presence or Absence of filter holes
- Short moulding
- Flash defect
- Damaged Sample
- Length of the flat dripper
- Color of dripper
- Product Defects

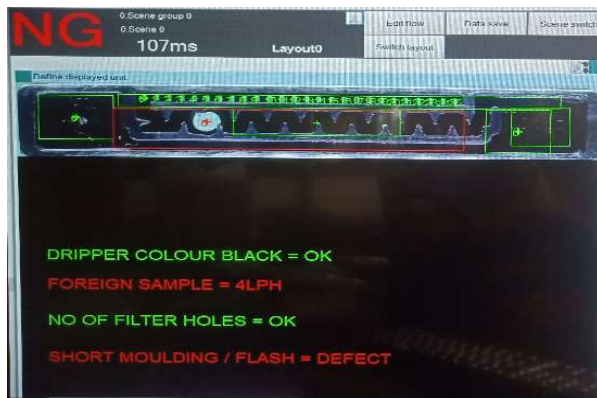
**Actual Images taken during trials**



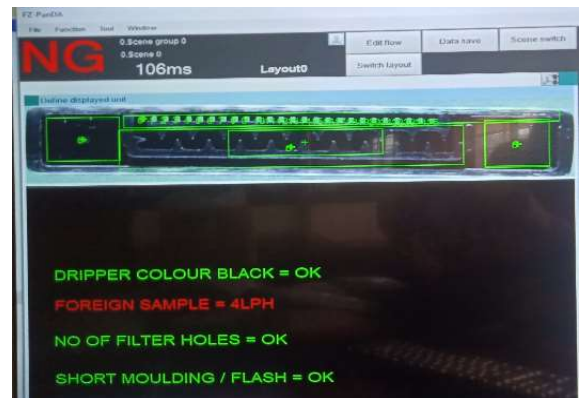
All OK



SHORT MOULDING/FLASH DEFECT



FOREIGN SAMPLE AND SHORT MOULDING DEFECT



FOREIGN SAMPLE



## Why Us

We have a team of experienced individuals who can cater to all your specific problems and give a tailor made solution just for you. We have experts in Machine building, Machine vision and Automations, and project management. At Sigma Automations we constantly thrive to achieve and accomplish more with each and every passing day.

- Understanding the customer requirements properly and suggesting them multiple solutions along with trial reports.
- Progress Reports and regular updates about the project
- Quality control
- An enthusiastic team of members who are innovative, focused and eager to learn.

## For more information or any queries kindly contact us:

Mobile Number: 9867988111 / 9833924069

Email id: pradeepc1969@gmail.com

Address:

Office: 5/11, Oswal Park, Pokhran Road 2, Thane West (400601)

Works: 11, Building No.2, Gupta Building, Empire Industrial Centrum, Ambernath (421505)